

ENVIRONMENTAL SIMULATIONS, COMPONENTS, TECHNOLOGY

Qualification of electromechanical components

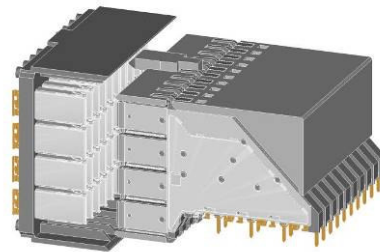
Our laboratory is accredited by German Accreditation Body Technology (DATech) e. V.



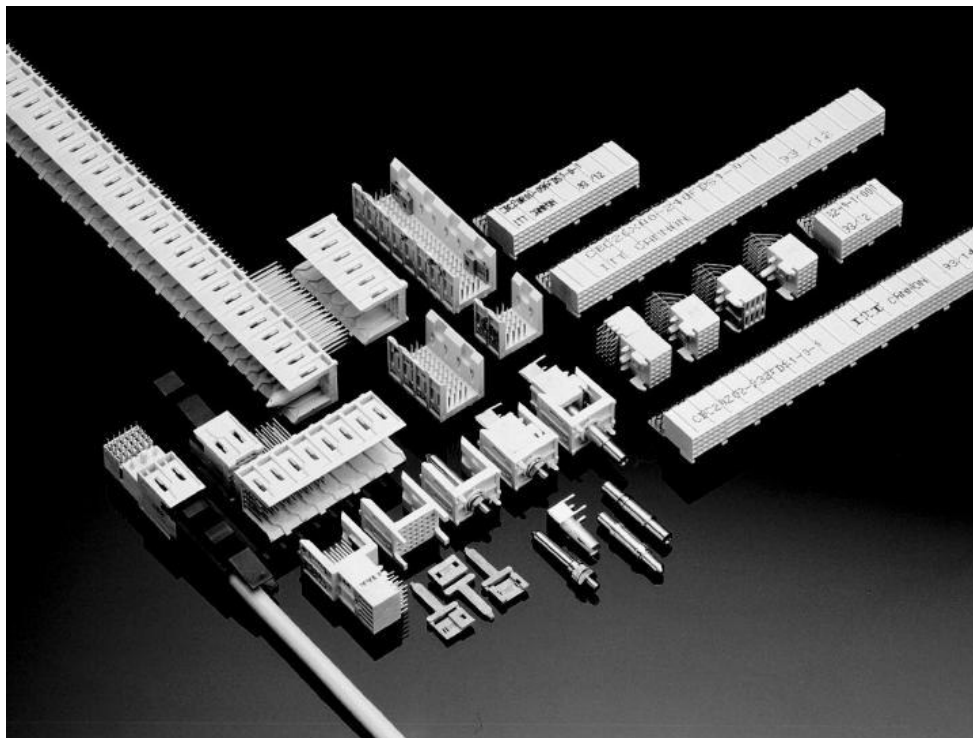
Electromechanical components often have a key function to play in the reliability of a functional unit. Appropriately qualified components assure the functionality and reliability specified by customers throughout the lifetime of the products.

Our services

- Development of test programs for component qualification
- Testing and qualification in accordance with all typical standards – for example, IEC and customer-specific requirements (such as Telcordia; formerly Bellcore)
- Lifetime tests under standard loads or simulation of practical application scenarios
- Damage analyses for troubleshooting faults, in addition to development of remedial measures



Erni, ERMET XD



ITT Cannon; system connector conformant with IEC 1076

ENVIRONMENTAL SIMULATIONS, COMPONENTS, TECHNOLOGY

Contact technology

Electromechanical contacts are exposed during their operation to numerous types of loads and stresses that often cause early failures – for example, climatic and mechanical effects, and insertion and withdrawal actions. We can help you to ensure the reliability of your products to meet applicable requirements to raise your customers' level of satisfaction.

Spectrum of electromechanical components

Connectors, switches, pushbuttons, keyboards, relays, solder-free connection system (IDC, wrap, crimp, press-in procedures)

Electrical characteristics

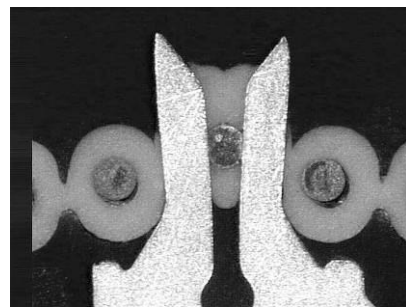
- Resistance characteristic
- Insulation characteristic
- Electric strength
- Current-carrying capacity

Mechanical parameters

- Insertion cycles
- Insertion and withdrawal forces
- Contact forces
- Wear performance
- Contact geometry
- Micro friction

Basic analyses

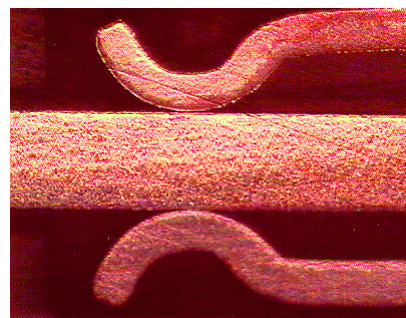
- Fretting corrosion
- Fritting characteristic
- Migration
- Contact lubrication
- Alternative contact surfaces



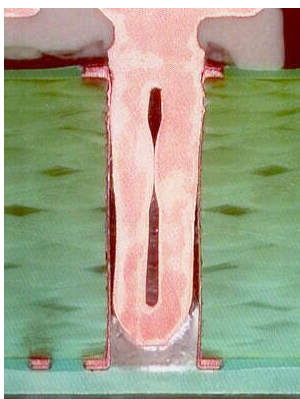
IDC contact



Crimp contact



Plug-in contact



Press-in connection

SGS Germany GmbH
 Center for Quality Engineering
 Hofmannstrasse 50
 81379 Munich
 Phone: +49 89 / 787475-100
 Fax: +49 89 / 1250406-4100
 e-mail: cqe@sgs.com
 internet: www.sgs-cqe.de

Contact: Tilman Heinisch
 Phone: +49 89 / 787475-102